

CHANGE: SID BZO 5Z REPLACED BY OZE 5Z

SID (CAT H)

Nota generale

Procedure al di fuori degli spazi aerei controllati.

General remark

Procedures outside controlled airspace.

OZE 5Z

Dopo il decollo continuare prua pista (TR 358°) fino ad intercettare e seguire RDL 353 TNT VOR (TR 353°) fino al punto RDL 353/16 NM TNT VOR/DME, quindi virare a destra per intercettare e seguire RDL 225 OZE VOR per OZE VOR/DME.

OZE 5Z

After take-off proceed on runway heading (TR 358°) until intercepting and following RDL 353 TNT VOR (TR 353°) until point RDL 353/16 NM TNT VOR/DME, then turn right to intercept and follow RDL 225 OZE VOR bound to OZE VOR/DME.

Nota

Minimo gradiente di salita 730 ft/NM (12%) fino a lasciare 4000 ft, e 523 ft/NM (8.6%) fino a lasciare 9500 ft.

Remark

Minimum climb gradient 730 ft/NM (12%) until leaving 4000 ft, and 523 ft/NM (8.6%) until leaving 9500 ft.

MCA/MCL: RDL 353/16 NM TNT VOR/DME 9500 FT; OZE VOR/DME FL 125

TNT 5X

Dopo il decollo procedere su TR 193° fino ad intercettare e seguire RDL 208 TNT VOR (TR 208°) fino al punto RDL 208/17 NM TNT VOR/DME, quindi virare a sinistra per TNT VOR/DME.

TNT 5X

After take-off proceed on TR 193° until intercepting and following RDL 208 TNT VOR (TR 208°) until point RDL 208/17 NM TNT VOR/DME, then turn left bound to TNT VOR/DME.

Nota

Causa ostacoli rilevanti situati a Sud dell'aeroporto, il decollo dovrà avvenire in VMC fino alla quota di 5000 ft ed in ogni caso mantenendo un gradiente non inferiore a 517 ft/NM (8.5%).

Remark

Due to relevant obstacles South of the airport, take-off should be performed in VMC conditions until 5000 ft and always maintaining a climb gradient not less than 517 ft/NM (8.5%).

MCA/MCL: RDL 208/17 NM TNT VOR/DME 8000 FT; TNT VOR/DME FL 125

TNT 5Z

Dopo il decollo continuare prua pista (TR 358°) fino ad intercettare e seguire RDL 353 TNT VOR (TR 353°) fino al punto RDL 353/16 NM TNT VOR/DME, quindi virare a destra per TNT VOR/DME.

TNT 5Z

After take-off proceed on runway heading (TR 358°) until intercepting and following RDL 353 TNT VOR (TR 353°) until point RDL 353/16 NM TNT VOR/DME, then turn right bound to TNT VOR/DME.

Nota

Minimo gradiente di salita 730 ft/NM (12%) fino a lasciare 4000 ft, e 500 ft/NM (8.2%) fino a lasciare 8200 ft.

Remark

Minimum climb gradient 730 ft/NM (12%) until leaving 4000 ft, and 500 ft/NM (8.2%) until leaving 8200 ft.

MCA/MCL: RDL 353/16 NM TNT VOR/DME 8200 FT; TNT VOR/DME FL 125

Intenzionalmente bianca

Intentionally left blank

DOC 8168 ED. 6 – 2014 AMDT 7

CHANGE: REPRINTING

Remarks:

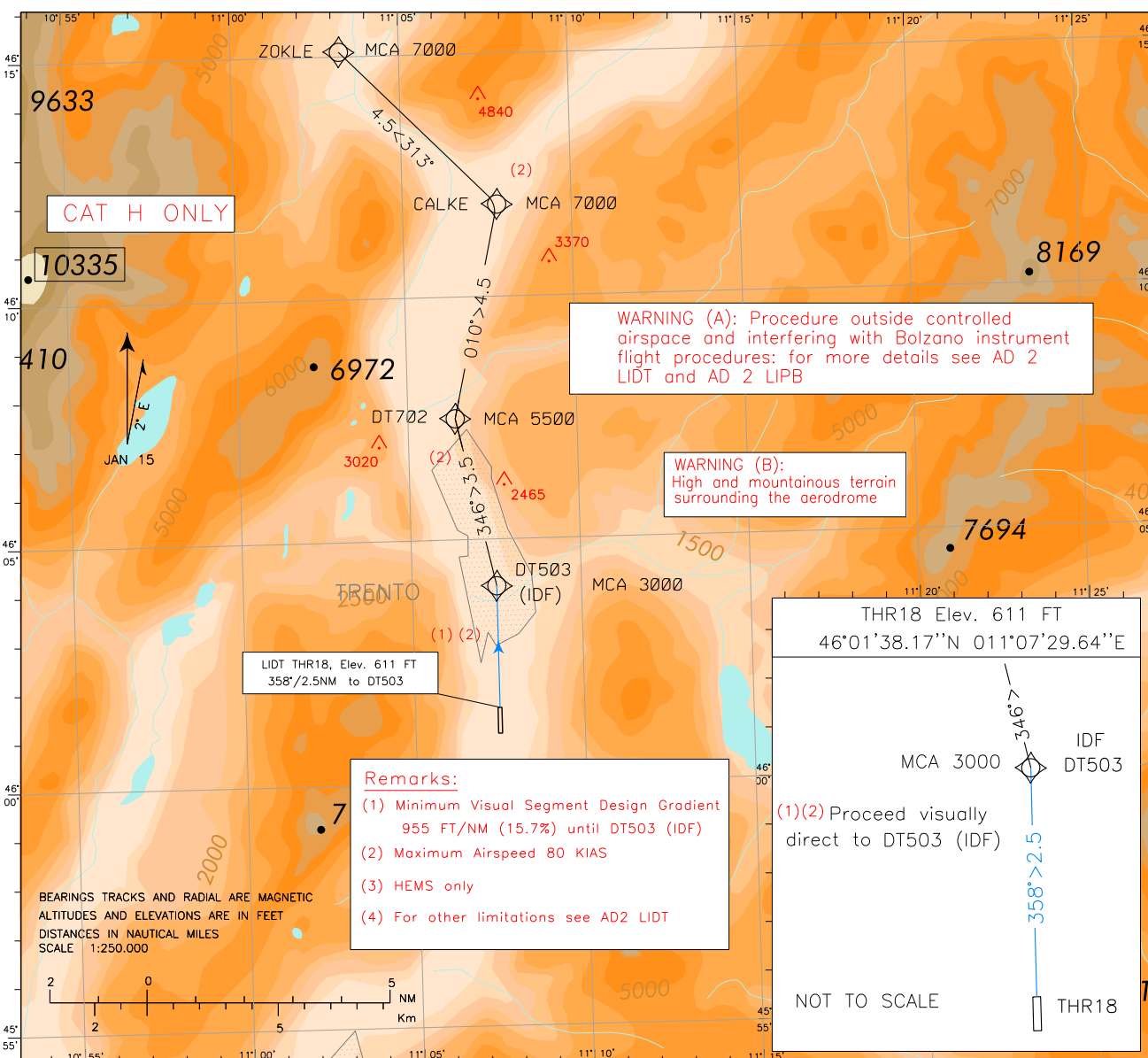
- (5) EGNOS/SBAS augmentation required
- (6) RNP 1 required

Padova ACC	120.725
Padova FIC	124.150
AFIS Trento Aerodrome Info	119.650
AFIS Bolzano Aerodrome Info	120.600

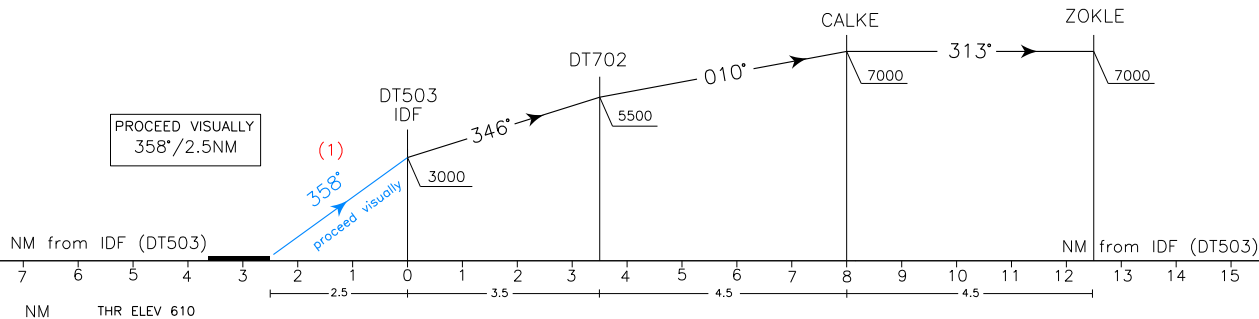
AD ELEV
610

LIDT

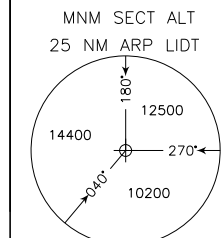
TRENTO/Mattarello
RNP ZOKLE Departure



TRANSITION ALT 10000



	Min Climb (FT/NM)	FT/min at GS			
		60	70	80	90
Visual to DT503	955 (15.7%)	955	1115	1270	1430
DT503 to DT702	705 (11.6%)	705	820	940	1060
DT702 to CALKE	335 (5.5%)	335	390	445	500



Trento RNP ZOKLE Departure

Path Terminator	Waypoint identifier	Flyover	Course/Track °M (°T)	Turn Direction	Altitude Constraint (ft)	Speed Limit (kt)	Leg Distance (NM)	Navigation Specification
IF	DT503 (IDF)	-	-	-	+3000	80	-	RNP 1
TF	DT702	-	346 (347.5)	-	+5500	80	3.5	RNP 1
TF	CALKE	-	010 (012.5)	-	+7000	80	4.5	RNP 1
TF	ZOKLE	-	313 (315.3)	-	+7000	-	4.5	RNP 1

Waypoints Table formatted according ARINC 424 standards

Waypoint	Latitude	Longitude
DT503	N46040333	E011072981
DT702	N46073066	E011062384
CALKE	N46115425	E011074756
ZOKLE	N46150647	E011031328